



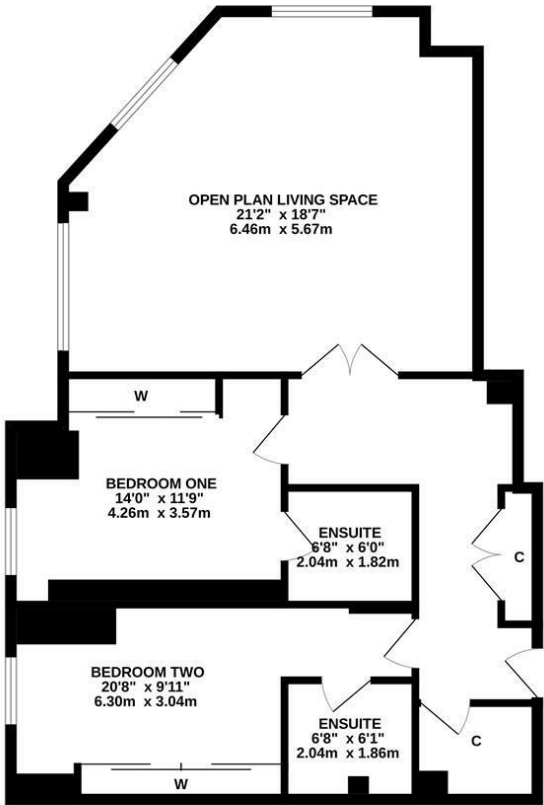
SUPER STYLISH PRESENTATION! This great two bedroom first floor apartment is ideally located within Centralofts. Centralofts, positioned on Waterloo Street is perfectly placed just off Westgate Road, providing easy access to Newcastle's Central Station, countless superb restaurants, cafes, pubs, bars and a varied range of cultural activities are also just a short walk away.

The accommodation briefly comprises: communal entrance at ground floor level with secure entry phone, daytime concierge service and stairs to the first floor; entrance hall with two storage cupboards; an impressive 21ft open plan living space with tall ceilings and dual aspect windows, kitchen area with a range of fitted units and work surfaces together with integrated appliances, breakfasting island and both spot and hanging lighting; two bedrooms, both with fitted wardrobe storage cupboards and en-suite shower rooms, complete with three piece suites. With allocated under-ground parking, early viewings are advised to avoid disappointment!

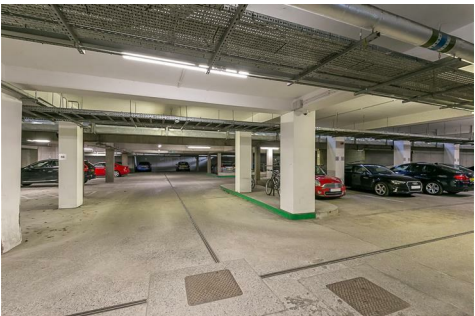
Super Stylish First Floor Apartment | 882 Sq ft (82.0m2) | Two Bedrooms with En-Suites | Impressive 21ft Open Plan Living Space | Allocated Under-Ground Parking | City Centre Location | Leasehold with 104 Years Remaining | Ground Rent £125 Per Annum | Service Charge £5,000 Per Annum | Council Tax Band E | EPC: D



FIRST FLOOR
882 sq.ft. (82.0 sq.m.) approx.



TOTAL FLOOR AREA: 882 sq.ft. (82.0 sq.m.) approx.
Whilst every attempt has been made to ensure the accuracy of the floorplan contained herein, measurements of doors, windows, rooms and any other items are approximate and no responsibility is taken for any error, omission or mis-statement. This plan is for illustrative purposes only and should be used as such by any prospective purchaser. The services, systems and appliances shown have not been tested and no guarantee as to their operability or efficiency can be given.
Made with Memphis v2024



Offers Over £160,000

IMPORTANT NOTE: These particulars and the descriptions and measurements herein do not constitute representation and whilst every effort has been made to ensure accuracy, this cannot be guaranteed.

